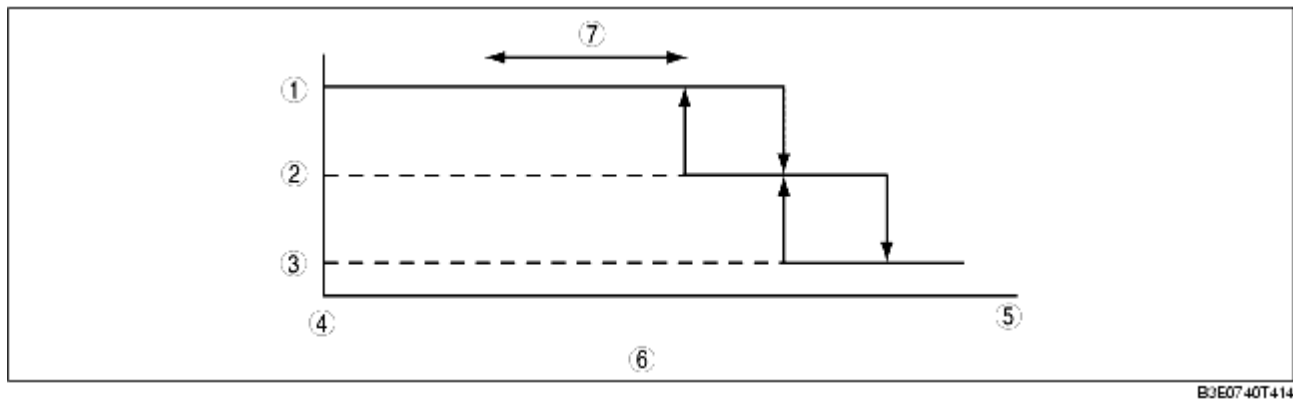


# AIRFLOW MODE CONTROL OPERATION

B3E074061190T11

## Airflow Mode Automatic Control

- The climate control unit determines the airflow mode based on the current air mix actuator opening angle.



1	VENT
2	BI-LEVEL
3	HEAT
4	COLD
5	HOT
6	Air mix actuator opening angle
7	Amount varies.

## Correction

### Ambient temperature correction

- To improve windshield and door glass from fogging, airflow mode is fixed at HEAT/DEF when the ambient temperature is low. However, ambient temperature correction does not operate when the temperature is set at MAX COLD.

### Engine coolant temperature correction (Warm-up correction)

- Switches the airflow mode after the engine is started in winter in accordance with the increase in engine coolant temperature to prevent discomfort caused by cold air blown towards the feet. The engine coolant temperature correction is performed only when the cabin temperature is **13 °C {55 °F} or less**, or the cabin temperature is **23 °C {73 °F} or less** and sunlight intensity is relatively low.

1	DEFROSTER
2	HEAT/DEF
3	HEAT
4	AUTO
5	LOW
6	HIGH
7	Engine coolant temperature

## Airflow Mode Manual Control

- The airflow modes can be switched by operating the each mode switches.

Airflow mode	Switch operated	Air vent
VENT	VENT switch	CENTER VENT, SIDE VENT
BI-LEVEL	BI-LEVEL switch	CENTER VENT, SIDE VENT, FRONT HEAT, REAR HEAT
HEAT	HEAT switch	SIDE VENT (L.H.D.), FRONT HEAT, REAR HEAT, SIDE DEMISTER (low volume), DEFROSTER (low volume)
HEAT/DEF	HEAT/DEF switch	SIDE VENT (L.H.D.), FRONT HEAT, REAR HEAT, SIDE DEMISTER, DEFROSTER
DEFROSTER	DEFROSTER switch	SIDE VENT, SIDE DEMISTER, DEFROSTER